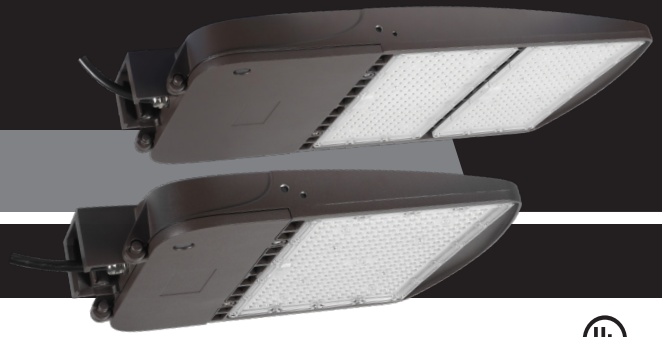


INSTALLATION FOR FLH5S HIGH WATTAGE FLOOD SERIES

SAVE THESE INSTRUCTIONS - READ ALL INSTRUCTIONS CAREFULLY



CAN ICES-005 (B) / NMB-005 (B)



WARNING

PLEASE READ ALL INSTRUCTIONS BEFORE ATTEMPTING INSTALLATION.

- To avoid risk of fire or electrical shock, this product should be installed and maintained by a qualified electrician in accordance with all national and regional electrical codes.
- Turn off power to fixture during installation and maintenance.
- Do not use an electrical generator to test this product.
- Do not install fixture on rainy days.
- Both during or after the installation, if there is smoke or fire, please disconnect power immediately and notify authorized personnel.
- This product is designed for outdoor applications.

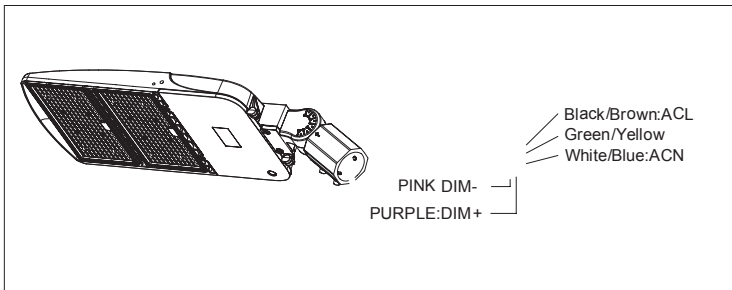
PARAMETERS

| Part No. | Input Voltage | Frequency | Power | Rated Current |
|------------------|---------------|-----------|-------|---------------|
| FLH5S-100W415-DB | AC 120-347V | 50/60Hz | 100W | 0.916A |
| FLH5S-150W415-DB | | | 150W | 1.375A |
| FLH5S-200W415-DB | | | 200W | 1.833A |
| FLH5S-240W415-DB | | | 240W | 2.2A |
| FLH5S-300W415-DB | | | 300W | 2.75A |

INSTRUCTION

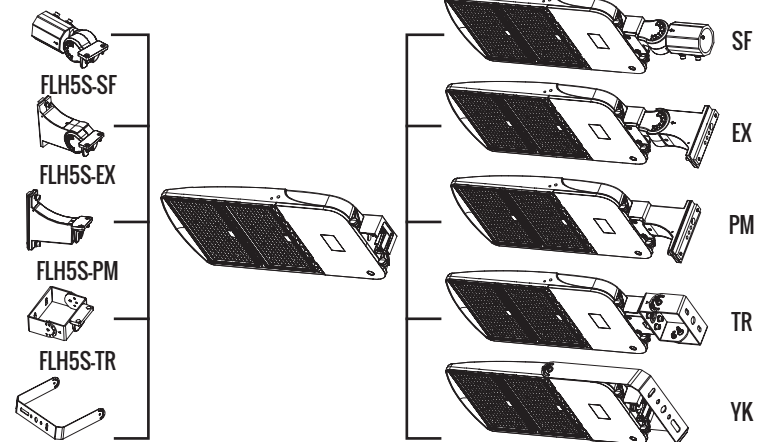
This product offers 1-10VDC dimming.
If dimming is not required, please cap off dimming wires when doing installation.

WIRING DIAGRAM:



OPTIONAL MOUNTING BRACKETS

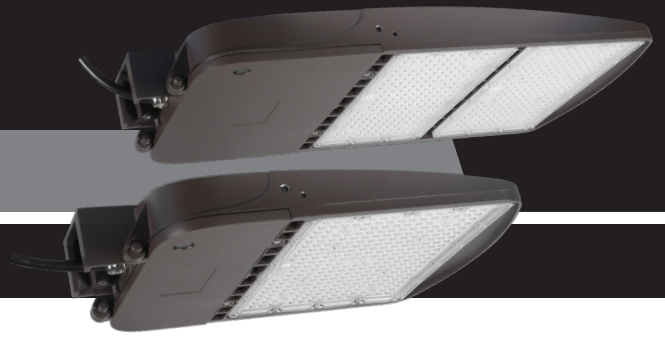
There are 5 optional brackets for this fixture. The following is flood fixtures with different brackets.



FLH5S-YK - 100/150/200
FLH5S-YK - 240/300

INSTALLATION FOR FLH5S HIGH WATTAGE FLOOD SERIES

SAVE THESE INSTRUCTIONS - READ ALL INSTRUCTIONS CAREFULLY



MOUNTING BRACKET INSTALLATION:

Split-fitter Installation FLH5S-SF

1. Disassemble the slip-fitter with a wrench.

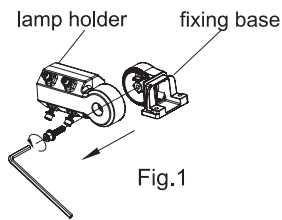


Figure 1

2. Pass the fixture's AC input wires through the fixing base, then tighten screws to assemble fixing base to fixture body.

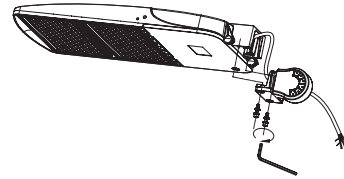


Figure 2

3. Pass the fixture's input wires through the lamp holder and lock it.

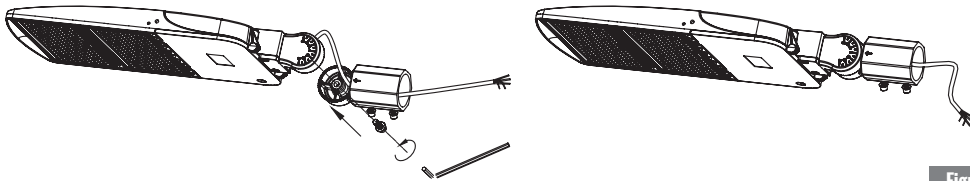


Figure 3

4. Loosen the 4 locking bolts in the SF bracket by a wrench, as Fig. 4.

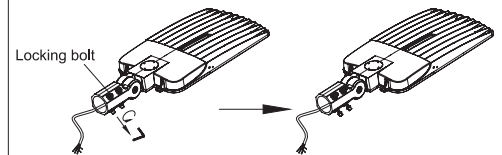


Figure 4

5. Connect the fixture's AC input wires to pole-wires with connectors, L to L (black), N to N (White), PE to PE (Green): If need to connect dimming wires from the pole to fixture, please also use the connector to connect "Dim +" (purple) to "Dim +" (purple) "Dim -" (pink) to "Dim -" (pink).

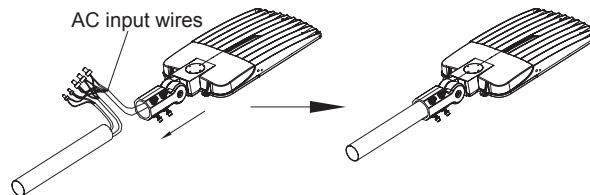


Figure 5

6. Tighten the 4 locking bolts back as Fig. 6.

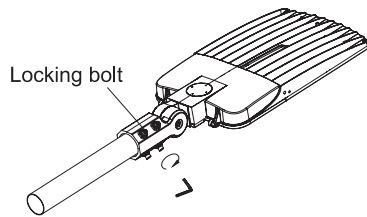


Figure 6

7. Loosen the locking bolt in the slip-fitter by a wrench to adjust fixture to a appropriate angle, adjustable angle range 90°, then tighten this locking bolt.

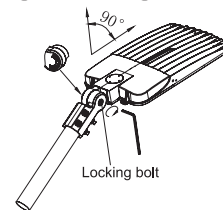


Figure 7

Square / Round Pole-mount with Slip-fitter Installation FLH5S-EX

1. Disassemble the bracket with a wrench, open the cover on the lamp holder.

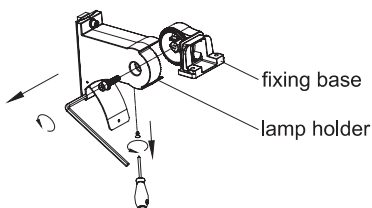


Figure 1

2. Pass the fixture's AC input wires through the fixing base, then tighten screws to assemble fixing base to fixture body.

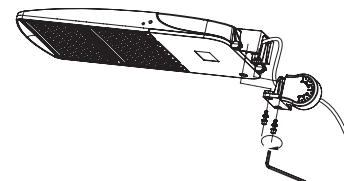
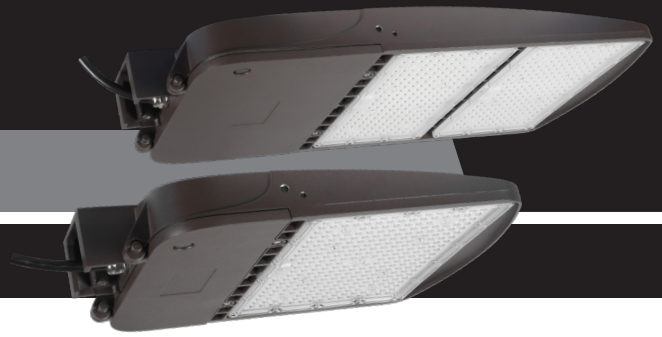


Figure 2

INSTALLATION FOR FLH5S HIGH WATTAGE FLOOD SERIES

SAVE THESE INSTRUCTIONS - READ ALL INSTRUCTIONS CAREFULLY



3. Pass the fixture's input wires through the lamp holder and lock it.

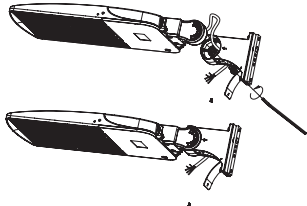


Figure 3

4. Remove screws with screwdriver. Set aside Iron Bar for future use. Remove the fixing screws to open the junction box cover. Pass the fixture's AC input wires through the junction box as shown in Figure 4.

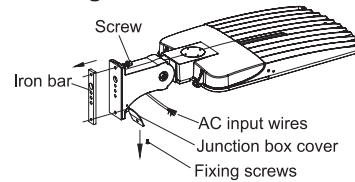


Figure 4

5. When installing to a square / round pole, align the holes of the EX bracket and pole. Pass the fixing screws through both holes. Place the iron bar inside of the pole to attach fixing screws. ATTENTION: When installing to a round pole, remove the rubber gasket as shown in Figure 5.

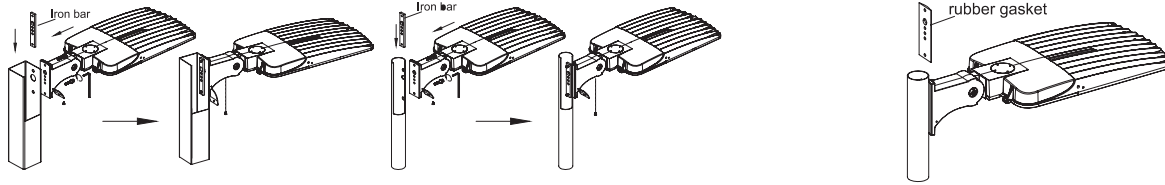


Figure 5

6.1. Pass the fixture's AC input wires through the pole. Pull them out together with the pole wires for connection as per Figure 6.1. Pass the pole wires into the EX bracket. Pull them out together with the fixture's AC wire from the junction box. Connect the fixture's AC input wires to pole wires with connectors. L to L (Black), N to N (White), PE to PE (Green). If need to connect dimming wires from pole to fixture, please add connectors to connect Dim - (Purple) to Dim - (Purple) and Dim - (Pink) to Dim - (Pink).

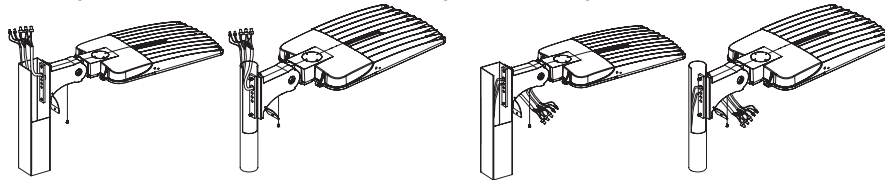


Figure 6.1

7.1. Push the connected wires inside of the pole, close the pole's top cover, then close the junction box cover by tightening the fixing screws, as Fig 7.1.

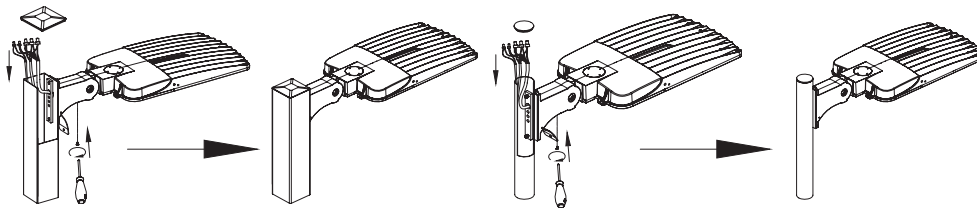


Figure 7.1

7.2. Push the connected wires into bracket junction box, close the box cover by tightening the fixing screws, then close the pole's top cover as Fig 7.2.

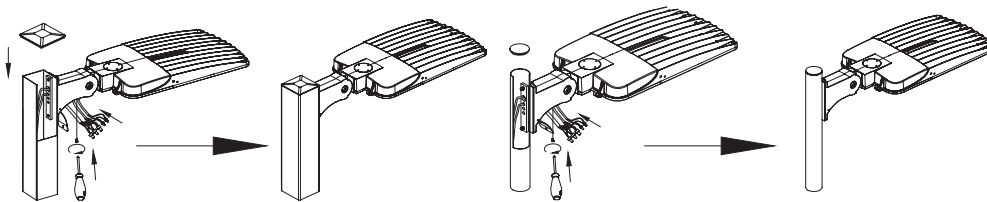
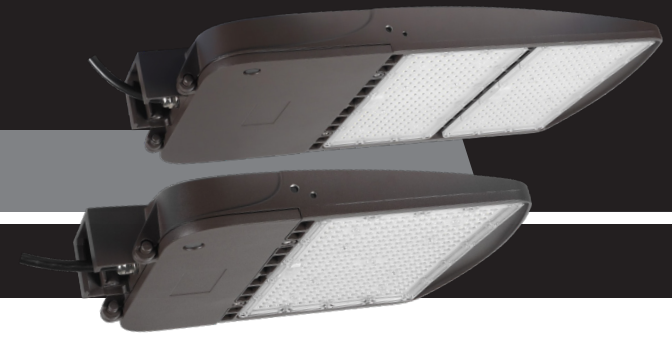


Figure 7.2

INSTALLATION FOR FLH5S HIGH WATTAGE FLOOD SERIES

SAVE THESE INSTRUCTIONS - READ ALL INSTRUCTIONS CAREFULLY



8. Loosen the locking bolt by a wrench to adjust the fixture to an appropriate angle, adjustment range 15°, then tighten this locking bolt as Fig 8.

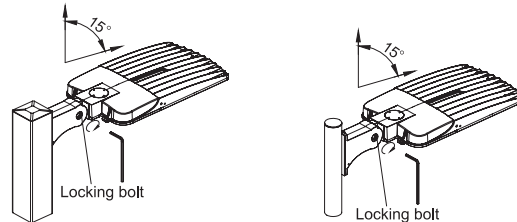


Figure 8

Square / Round Pole-mount (FLH5S-PM)

1. Loosen and remove the screws from the PM bracket. Open the junction box cover. Pass the fixture's AC input wires through the PM bracket.

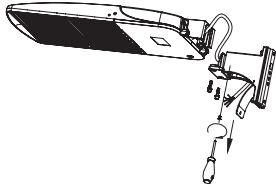


Figure 1

2. Assemble Type C bracket to fixture body by tightening fixing screws with a wrench.

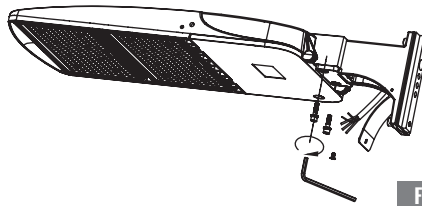


Figure 2

3. Remove screws with screwdriver. Set aside Iron Bar for future use. Remove the fixing screws to open the junction box cover. Pass the fixture's AC input wires through the junction box as shown in Figure 3.

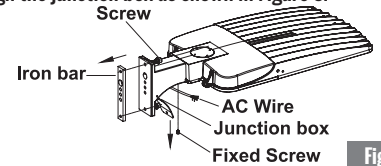


Figure 3

4. When installing to a square / round pole, align the holes of the PM bracket and pole. Pass the fixing screws through both holes. Place the iron bar inside of the pole to attach fixing screws. **ATTENTION:** When installing to a round pole, remove the rubber gasket as shown in Figure 4.

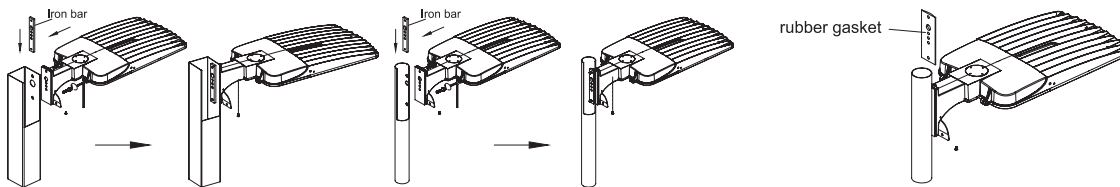


Figure 4

5. Pass the fixture's AC input wires through the pole. Pull them out together with the pole wires for connection as per Figure 5. Pass the pole wires into the PM bracket. Pull them out together with the fixture's AC wire from the junction box. Connect the fixture's AC input wires to pole wires with connectors. L to L (Black), N to N (White), PE to PE (Green). If need to connect dimming wires from pole to fixture, please add connectors to connect Dim + (Purple) to Dim + (Purple) and Dim - (Pink) to Dim - (Pink).

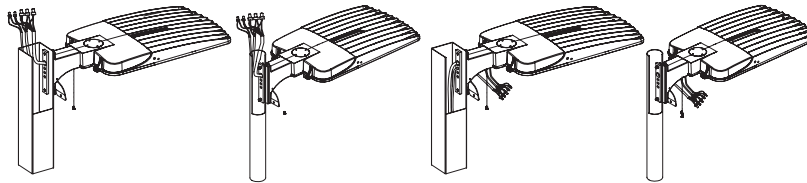


Figure 5

6.1. Push the connected wires inside the pole. Close the pole's top cover. Close the junction box cover by tightening the fixing screws as per Figure 6.1.

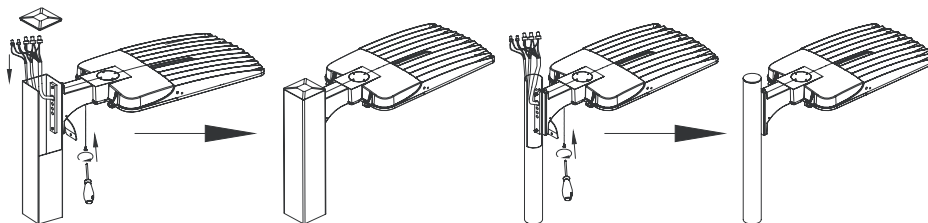
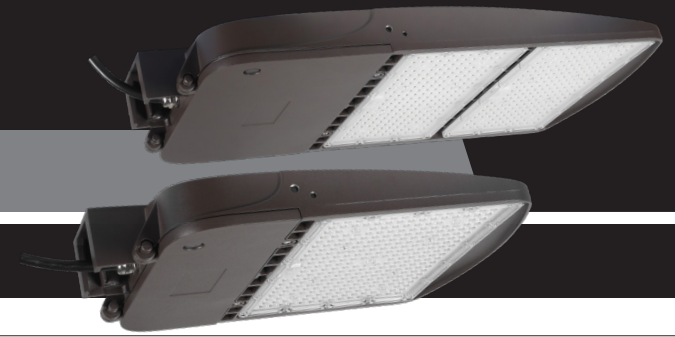


Figure 6.1

INSTALLATION FOR FLH5S HIGH WATTAGE FLOOD SERIES

SAVE THESE INSTRUCTIONS - READ ALL INSTRUCTIONS CAREFULLY



6.2 Push the connected wires into the PM bracket junction box. Close the box cover by tightening the fixing screws. Close the pole's top cover as per Figure 6.2.

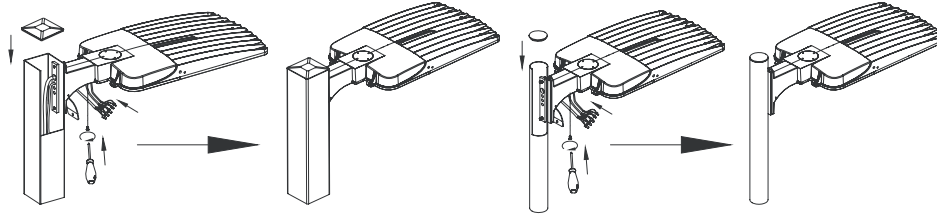


Figure 6.2

Trunnion Mount (FLH5S-TR)

1. Mark the fixing holes locations on the wall with TR bracket, then drill the hole in 10mm diameter with an electric drill:

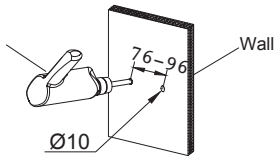


Figure 1

2. Knock the two expansion bolts into the wall with hammer.

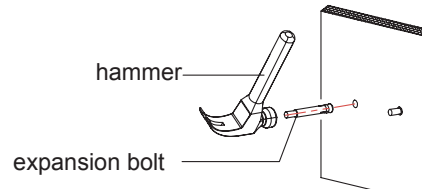


Figure 2

3. Attach the TR bracket to the mounting surface by tightening the screws with a wrench - Figure 3

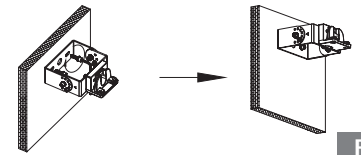


Figure 3

4. Pass the fixture's AC input wires through the TR bracket. Then attach the fixture to the TR bracket. Tighten fixing screws to lock it to the TR bracket with a wrench.

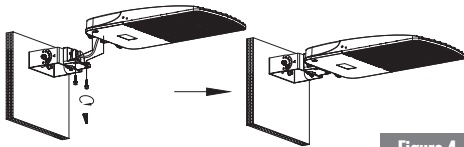


Figure 4

5. Loosen the angle adjustment screws on both sides of the TR bracket. Rotate fixture to the angle required. Tighten 2 screws to secure angle. Note: The adjustment angle is 0-90°. (Fig. 5)

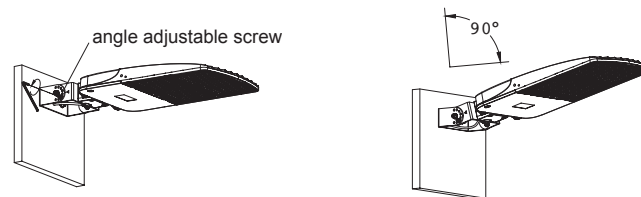


Figure 5

Yoke Mount (FLH5S-YK)

1. Loosen the screws on both sides of the bracket with a wrench. Adjust the Yoke bracket angle to be parallel with the installation surface. (Fig. 1).

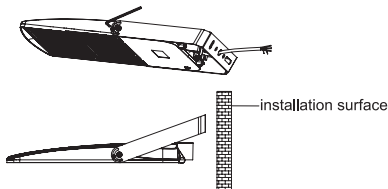


Figure 1

2. Mark the installation holes on the wall with the Yoke bracket. Drill holes in 10mm diameter. (Fig 2)

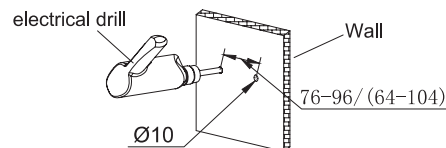


Figure 2

3. Knock expansion bolts into each hole with hammer. (Fig 3)

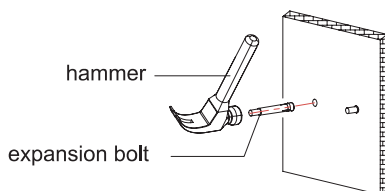


Figure 3

4. Mount Yoke bracket to wall and tighten all screws to secure it to wall. Connect the fixture's AC input wires to junction box wires with connectors. L to L (Black), N to N (White), PE to PE (Green). Ensure seal to junction box is waterproof. Note: The adjustment angle is 0-90°. (Fig. 4)

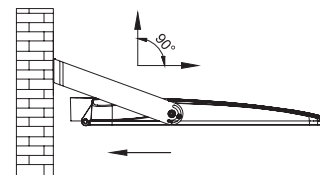
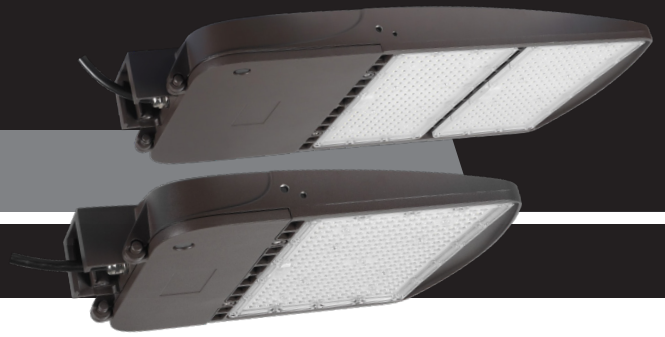


Figure 4

INSTALLATION FOR FLH5S HIGH WATTAGE FLOOD SERIES

SAVE THESE INSTRUCTIONS - READ ALL INSTRUCTIONS CAREFULLY



Options:

- FLH5S-SENPIR-U PIR Sensor 120-277V
- FLH5S-SENPIR-3 PIR Sensor 277-480V
- FLH5S-SENPC-U PhotoCell 120-277V / Socket Base Included
- FLH5S-SENPC-3 PhotoCell 277-480V / Socket Base Included
- FLH5S-SENMC-U Microwave Sensor 120-277V

PIR Sensor

1. Open Fixture Cover (loosen 2 screws). (Fig. 1)

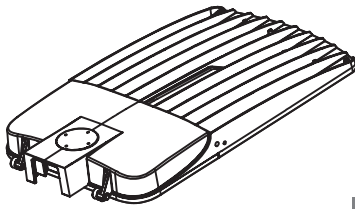


Figure 1

2. Put driver cover on ground. Hammer out knockout hole. (Fig. 2)

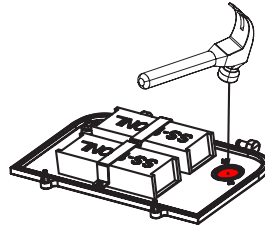


Figure 2

3. Install Sensor. (Fig. 3)

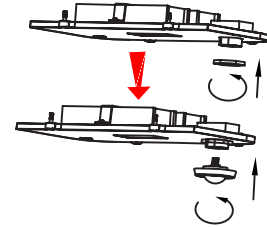


Figure 3

4. Secure the driver cover back to fixture body. (Fig. 4.)
Connect wires as per schematic (Fig. 6.)

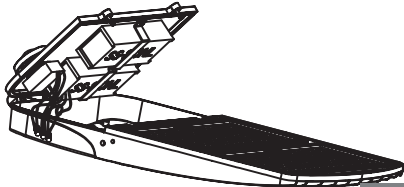


Figure 4

5. Lock driver cover screws tom complete installation (Fig. 5)

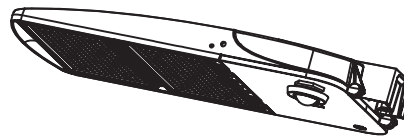


Figure 5

PIR Sensor Wiring Diagram

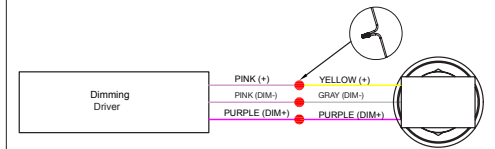


Figure 6

Microwave Sensor

1. Open Fixture Cover (Fig. 1).

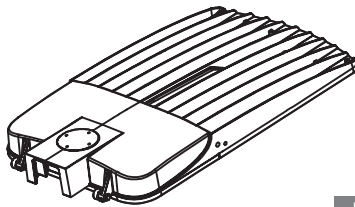


Figure 1

2. Put driver cover on ground. Hammer out knockout hole. (Fig. 2)

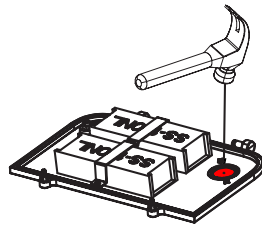


Figure 2

3. Install Sensor. (Fig. 3)

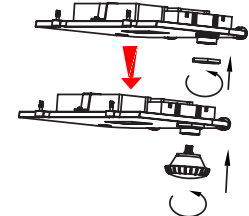


Figure 3

4. Secure the driver cover back to fixture body. (Fig. 4.)
4.) Connect wires as per schematic (Fig. 6.)

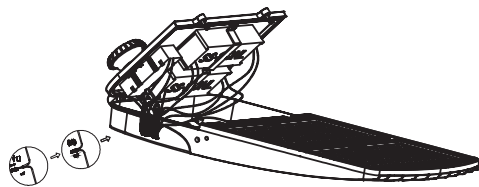


Figure 4

5. Lock driver cover screws tom complete installation (Fig. 5)

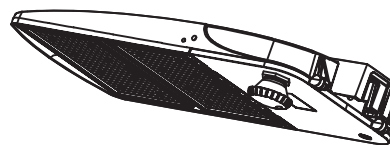


Figure 5

Microwave Sensor Wiring Diagram

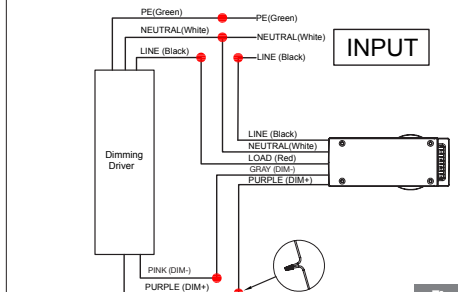
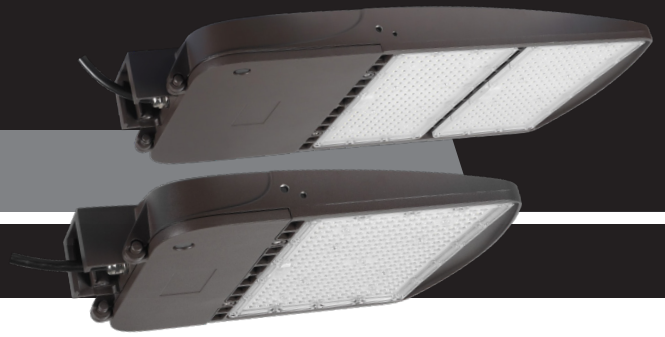


Figure 6

INSTALLATION FOR FLH5S HIGH WATTAGE FLOOD SERIES

SAVE THESE INSTRUCTIONS - READ ALL INSTRUCTIONS CAREFULLY



Photocell

1. Open Fixture Cover (Fig. 1)

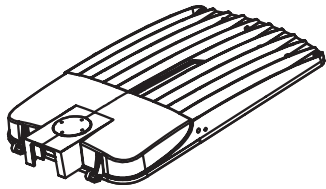


Figure 1

2. Use hammer to knock out the knockout hole on the specified area on back side of fixture (photocell will point upward when fixture is installed). (fig. 2)

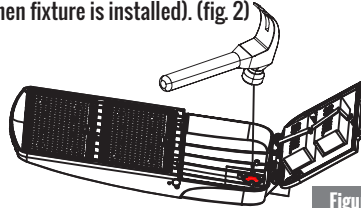


Figure 2

3. Turn fixture over (Fig. 3)

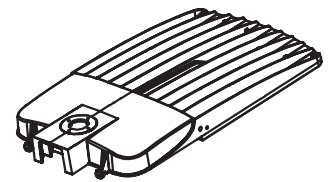


Figure 3

4. Use screws to attach the socket base and waterproof gasket. (Fig. 4). Wire photocell as per Fig. 7.

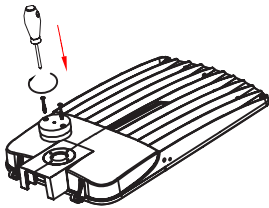


Figure 4

5. Twist in photocell & shorting cap. (Fig. 8).

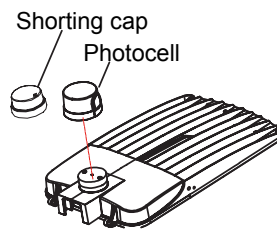


Figure 5

6. Installation finished. (Fig. 9.)

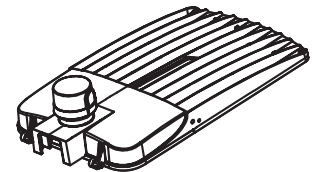


Figure 6

Photocell Sensor Wiring Diagram

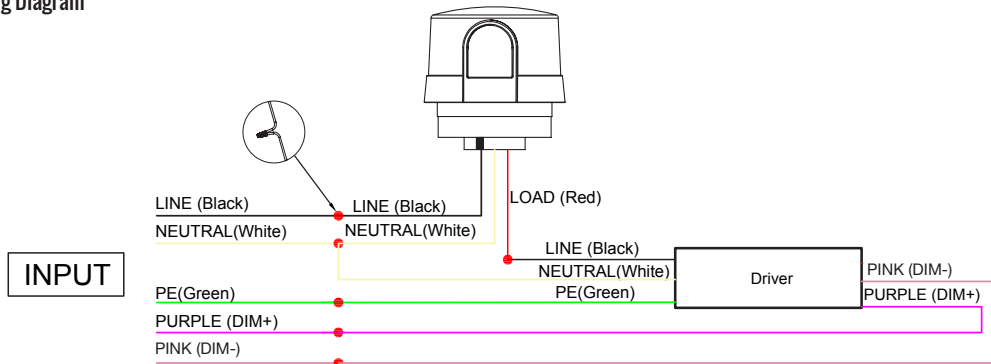
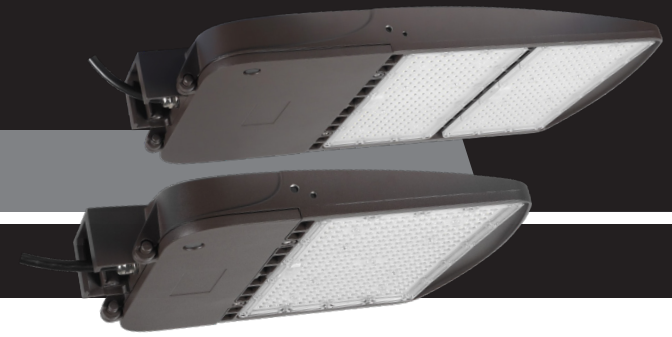


Figure 7

INSTALLATION FOR FLH5S HIGH WATTAGE FLOOD SERIES PIR & MICROWAVE SENSOR SETTINGS

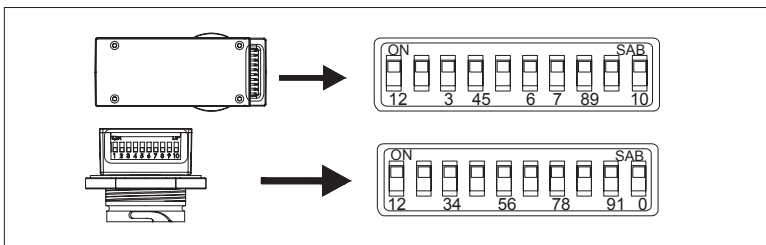


SAVE THESE INSTRUCTIONS - READ ALL INSTRUCTIONS CAREFULLY

FLH5S-SENPIR-U, FLH5S-SENPIR-3, FLH5S-SENMC-U (Please note that each sensor package also contains full dip switch instructions.)

PARAMETER SETTING BY DIP SWITCH

Consider the picture 1,2 set sensitivity; 3,4 set hold time; 5,6 set the lux; 7,8 stand-by light level; 9,10 set stand-by time;



DETECTION RANGE SETTING (SENSITIVITY)

Detection range is term used to describe the radii of the more or less circular detection zone produced on the ground after mounting the sensor light at a height of 40 ft. pull switch to the ON position as "↑" pull switch to the OFF position as "↓", switch location and detection range of the corresponding table is as follows :

| ON | | OFF | | SENSITIVITY | |
|----|---|-----|---|-------------|-----|
| ↑ | ↓ | ↑ | ↓ | 12 | 20% |
| ↓ | ↑ | ↓ | ↑ | 50% | |
| ↑ | ↓ | ↑ | ↓ | 75% | |
| ↓ | ↑ | ↓ | ↑ | 100% | |

SENSITIVITY: 1, 2

HOLD TIME SETTING

The light can be to stay ON for any period of time between approx. 10 sec and a maximum of 60 min. Any movement detected before this time elapse will re-start the timer. It is recommended to select the shortest time for adjusting the detection zone and for performing the walk test. Pull switch to the OFF position as "↓" switch location and detection range of the corresponding table is as follows:

| ON | | OFF | | TIME | |
|----|---|-----|---|-------|-----|
| ↑ | ↓ | ↑ | ↓ | 34 | 10S |
| ↓ | ↑ | ↓ | ↑ | 10Min | |
| ↑ | ↓ | ↑ | ↓ | 30Min | |
| ↓ | ↑ | ↓ | ↑ | 60Min | |

TIME : 3, 4

LIGHT-CONTROL SETTING

The chosen light response threshold can be infinitely from approx. 10-50lux, pull switch to the ON position as "↑", switch location and light-control of the corresponding table is as follows::

| ON | | OFF | | LIGHT | |
|----|---|-----|---|-------|--------------------------|
| ↑ | ↓ | ↑ | ↓ | 56 | ☀ (light sensor disable) |
| ↓ | ↑ | ↓ | ↑ | 10Lux | |
| ↑ | ↓ | ↑ | ↓ | 30Lux | |
| ↓ | ↑ | ↓ | ↑ | 50Lux | |

LUX : 5, 6

STAND-BY LIGHT LEVEL SETTING

Switch to the ON is "↑", switch to the OFF is "↓", The corresponding file of switch location and detection distance as follow:

| ON | | OFF | | STAND-BY LEVEL | |
|----|---|-----|---|----------------|----|
| ↑ | ↓ | ↑ | ↓ | 78 | 0% |
| ↓ | ↑ | ↓ | ↑ | 10% | |
| ↑ | ↓ | ↑ | ↓ | 30% | |
| ↓ | ↑ | ↓ | ↑ | 50% | |

STAND-BY LEVEL : 7, 8

STAND-BY TIME SETTING

File of switch location and detection distance as follow: file of switch location and detection distance as follow:

| ON | | OFF | | STAND-BY TIME | |
|----|---|-----|---|---------------|----|
| ↑ | ↓ | ↑ | ↓ | 91 0 | +∞ |
| ↓ | ↑ | ↓ | ↑ | 1Min | |
| ↑ | ↓ | ↑ | ↓ | 30Min | |
| ↓ | ↑ | ↓ | ↑ | 60Min | |

STAND-BY TIME : 9, 10